

CITY OF DOUGLAS NEWSLETTER

Fall 2009
Volume 5, Edition 2

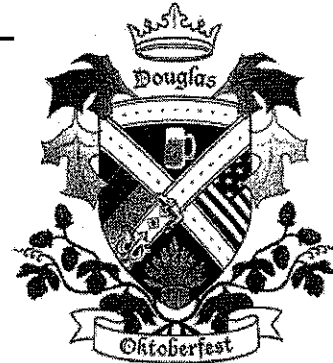
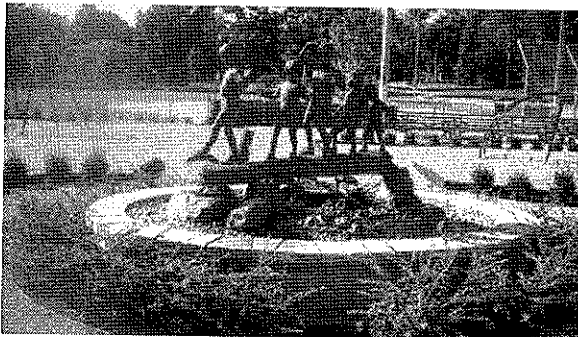
City
Launches New
Improved
User-Friendly Website!

Visit our new site at: [www.
ci.douglas.mi.us](http://www.ci.douglas.mi.us)

Please note: All City e-mail addresses have
changed. See listing on page 2 of this
newsletter.

BEERY PARK IMPROVEMENTS

Construction and landscape improvements began the first week of June at Beery Field ball park and playground. New landscaping, bleachers and playground equipment as well as updated electrical service have been completed. The water sculpture is a wonderful addition donated by the family of Mr. Ed. Strange. The official opening of the new playground area took place on July 30th with Mayor Balmer and Mayor Pro Tem Waddell presenting proclamations of appreciation to the family of Ed Strange and to Mr. Ed Sisk.



DOUGLAS OKTOBERFEST
Saturday, Oktober 3
Beery Field, Douglas
12:00 - 8:00 P.M.

All Proceeds Will Benefit The Continuing
Renovations of Beery Park / Field.

SCHEDULE OF EVENTS

- 12:00 p.m. Opening Ceremony
Parade
Rifle Ceremony
Tapping of the Keg
Alphorn performance
Bier Tent opens
Food Court opens
Stein and Shirt sales
- 1-4:00 p.m. Traditional German Band
Kinderplatz Kids Games
- 5-8:00 p.m. 12-piece German Band
Adult Keg Toss
Stein Holding Competition
Best Dressed Herr
& Fraulein Competition
Much more.....
- 8:00 p.m. Closing Ceremony



**Gekommen genieBen Sie den SpaB!
Come enjoy the fun!**

HOURS AND SCHEDULES

CITY HALL (269) 857-1438
Monday-Friday 8:00am - 4:30pm

COUNCIL MEETINGS
First and third Mondays 7:00pm

PLANNING COMMISSION
Second Wednesday 7:00pm

ZONING BOARD OF APPEALS
Fourth Tuesday 7:00pm (As needed)

DOWNTOWN DEVELOPMENT AUTHORITY
Second Tuesday 6:00pm

All City meetings are held in Dutcher Lodge City Hall unless otherwise noticed.

City Manager David Kowal
By Appointment

City Clerk Jean Neve

City Treasurer Bob Drexler

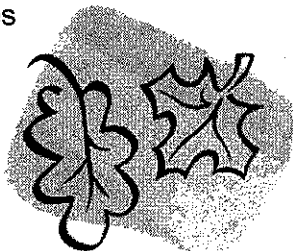
City Assessor Kelley Ziesemer
By Appointment
Tuesdays 12:30 - 4:30 p.m.

Community/Economic Development Director
By Appointment Ryan Kilpatrick

Police Department Chief Ken Giles
47 W. Center Street
Douglas (269)857-4339
Dial 911 after hours to speak to an officer.

Department of Public Works Director
(269)857-2763 Max Rodgers

Building Permits 1 800 626-5964
Michigan Township Services
111 Grand Street
Allegan MI 49010



New E-Mail Addresses for City Staff

General e-mail
douglas@ci.douglas.mi.us

Manager David Kowal
dkowal@ci.douglas.mi.us

Clerk Jean Neve
jneve@ci.douglas.mi.us

Community/Economic Development Director Ryan Kilpatrick
rkilpatrick@ci.douglas.mi.us

Treasurer Robert (Bob) Drexler
rdrexler@ci.douglas.mi.us

Assessor Kelley Ziesemer
kziesemer@ci.douglas.mi.us

Department of Public Works Director Max Rodgers
mrodgers@ci.douglas.mi.us

Police Department Chief Ken Giles
chiefgiles@sdpd.us

Did you know?????

You may look up tax and assessing information on the City website. Log into: www.ci.douglas.mi.us then click into "Services", "Tax & Assessing" and "Property Tax & Assessing Information".

The City of Douglas now offers the convenience of accepting credit cards for municipal payments. A third-party convenience fee will apply to cardholders who wish to pay via credit card.

The City of Douglas Code of Ordinances and Zoning Ordinance are now online with our new city website www.ci.douglas.mi.us

Recycle bags are available, free of charge, at the City Hall. Homes within the City of Douglas are serviced every other Tuesday. Stop in and pick up bags and a schedule.

Mr. Ryan Kilpatrick Joins City Staff

Ryan Kilpatrick has joined the City staff as its' new Community / Economic Development Director. Ryan has been working with the City as a contracted Planning / Zoning Specialist from Williams & Works for the past two years. Ryan will continue in his duties as Planning and Zoning Specialist but will be taking on the responsibilities of Community / Economic Development Director. The City is looking forward to many new and exciting community events. Ryan is available, by appointment, Monday thru Friday from 8:30 a.m. to 4:30 p.m.



Ryan and his wife Amber live in Grand Rapids and are expecting their first child (a boy) in September. Their household includes a dog and two cats. Welcome to the City of Douglas Ryan!

BOARDS, COMMISSIONS AND COMMITTEES

City Council

Greg Harvath
Martha Hoexter
Bob Sapita
Eric Smith
Dan Urquhart
Renee Waddell, Mayor

Planning Commission

David Burdick
Ron Dellartino
Paul Marineau
Christopher Nern, Chair
Alexa Urquhart
Karen Van Pelt
Renee Waddell

Zoning Board of Appeals

Jeff Greenwood
Kenneth Kutzel
Tarue Pullen
Bill Schumacher, Chair
Alexa Urquhart

DDA

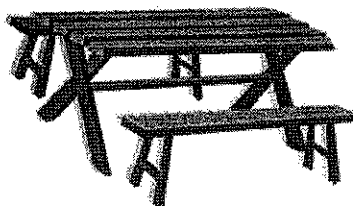
Nancy Ayers
Jeffrey Blandford
Helen DeGeatano
Sam Kendall
Marc Owens
Bill Schumacher
John Slater
William Smith, Chair
Renee Waddell

Assessment Board of Review

Linda Anderson
Maria Droz
Paul Marineau

Thank You to Spencer Gust!

The new picnic tables at Douglas Beach were built by Spencer Gust for his Eagle Scout Project. The tables have been the site of many picnics during the summer months.



They look great! Thanks
Spencer.

Meet the New Council Member

Mr. Eric Smith, 241 Wiley Road, was appointed to fill the city council seat vacated by Councilperson Diane Bailey at the Augst 17th meeting.

Eric will complete the unexpired term until November 2010.

He is a co-owner of Pumphouse Gym, a member of the Saugatuck / Douglas Area Business Association and served as a Mt. Baldhead Challenge Committee member.

Eric and his wife are the parents of an 18-month old son.

Thank you to all the volunteers from Wilderness Ridge who spent July 18th working to pull weeds and pick up trash at the Douglas Beach, Beery Field, at the City Hall and the Police Station.
Thanks for keeping our City beautiful.

General Tax Information to Remember

The City of Douglas sends out tax statements twice a year. The summer bill is mailed to property owners the first week of July and is payable by September 14th. The winter bill is mailed the first week of December and is payable by February 14th. The summer and winter bills combined cover a calendar year tax obligation.

If you have not received your tax statements by the middle of July and December please call the Treasurer's office for a duplicate copy.

To qualify for a Principal Residence Exemption (P.R.E.) you must own and occupy your residence by May 1st. Your drivers' license, voters registration and federal income tax return must reflect this address. If you have a 100% P.R.E. exemption you are exempt from paying the school operating millage and will see the word "EXEMPT" on that line of the tax bill.

Video Services Local Franchise Act

On April 2, 2009, Governor Granholm signed 2009 PA 004, amending 2006 PA 480, the Uniform Video Services Local Franchise Act. This Act specifically provides for a dispute resolution process regarding video/cable television complaints. Section 10(4)(5) and (6) sets forth the resolution process of the Commission for video disputes between customers and providers.

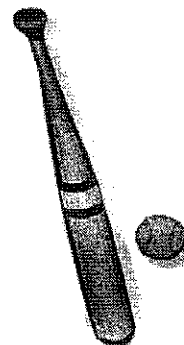
If a City of Douglas resident has a complaint, they should first attempt to resolve the complaint by directly contacting their video/cable company. If residents are unable to resolve the complaint the office of the Michigan Public Service Commission may be contacted at the following address or telephone.

*Michigan Public Service Commission
Attn: Video Franchising
6545 Mercantile Way
Lansing, MI 48909
Telephone: (866) 552-7725*

Dutchers have successful 2009 season

On Saturday, July 25th the Douglas Dutchers won Round Robin Tournament of 1858 Base Ball rules hosted by the Iron Diamonds in Portage, Indiana.

Congratulations Dutchers!

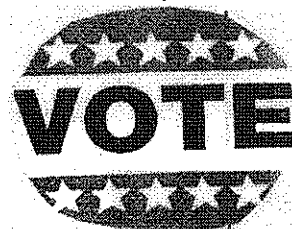


ELECTION NEWS

Every year voters in the City of Douglas have the opportunity to vote for positions on the city council. This year there are three seats open. These positions are non-partisan and are elected on the November ballot. The following individuals have filed Qualifying Petitions for the City of Douglas council positions.

Helen DeGeatano
Greg Harvath
Martha Hoexter
Renee Waddell

Remember to vote November 3rd. Polls are open from 7:00 a.m. to 8:00 p.m. If you are over 60 years of age, expect to be absent from the community or are unable to get to the polls, you may request an absentee ballot from the City Clerk.



LEAF AND BRUSH PICK UP SCHEDULE

Leaf Pick Up Oct. 1 to Nov. 30

Deposit leaves roadside in large piles, not in ditches. No garbage, pet waste, bricks, sticks, brush, grass clippings or construction materials. Please place leaves in piles separate from brush.

Brush Pick Up Continuing to Nov. 30

Deposit brush neatly on roadside, not in ditches. Please place cut ends in one direction. No tree limbs larger than 6-inches in diameter or tree stumps. Please place brush in piles separate from leaves.

Residents utilizing a professional landscaping company should require material disposal as part of the contracted services.

For landscape waste, other than leaves and brush, residents may want to contract for seasonal service.

Chef Container: Seasonal charge for added service April through November is \$110. Phone 1-616-494-0561.

LAKESHORE MICROBOOST, INC. Another option for yard waste disposal

Lakeshore Microboost, Inc. ("LMI") produces a line of chemical free "green" products, designed for agriculture, aquaculture, horticulture, hydroponics and other organic and green industries. LMI's founder, John Huyge developed methods for combining high carbon feedstocks, such as yard waste with high nitrogen feedstocks, such as farm manure and converting these into specialty soils, soil additives and biostimulants.

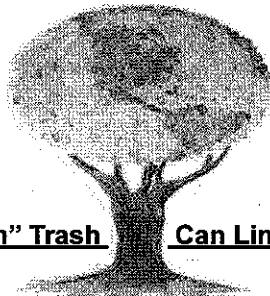
The LMI workplace is the quintessential "green" facility. Yard waste may be delivered by City of Douglas residents. Manure is procured from local farmers. Wood chips come from local tree services and LMI's own landscaping projects. These ingredients are mixed and directed to other processes at the LMI facility.

MICROBOOST is located at 6271 Whitehorse Lane, in Saugatuck Township. Take Blue Star Highway to Old Allegan Rd. Turn right onto Old Allegan. Turn left at 63rd Street then right onto White Horse Lane.

Yard Waste may be dropped off during open business hours. Monday - Friday
9 A.M. to 5 P.M.
Saturday
10 A.M. to 2 P.M.

This site is available for disposal of yard waste at no charge to Douglas residents. No stumps or large wood debris. Loose yard waste only, no bags. This site operates on the honor system. Please place your debris with similar debris piles.

Douglas - the City that Never Stops Thinking "Green"



Douglas Tests "Green" Trash Can Liners

The City of Douglas is among the first municipalities in the United States to begin using a new trash can liner made with 70% post-consumer recycled (PCR) material. The PCR Content in the Greencore Can Liners far exceeds plastics industry goals, reducing the carbon footprint by as much as 40%.

One of the City's purchasing goals is to use products that contain recycled material whenever practical. This is the first PCR bag the City found that performs as well and costs no more than conventional bags. They are also made in Michigan - an added benefit.

The bag manufacturer, Petoskey Plastics, developed engineered 3-layer technology that sandwiches PCR between layers of high strength virgin plastic, resulting in bags that are as strong, or stronger, than bags made of 100% virgin resin at a comparable thickness. Historically, bags made with recycled plastic have not fared well because of performance issues. PCR plastic is more environmentally friendly because it is derived from a finished product that has served its intended use and has been diverted or recovered from waste destined for disposal. It is then considered "post-consumer". This differs from "pre-consumer" or "post-industrial" waste, which is generated by industrial or manufacturing waste.

The product's strength, price, and green qualities have been key components to its early success. The City of Douglas was pleasantly surprised to find Petoskey Plastic's eco-friendly bag performing as well or better than conventional bags at the same or slightly lower cost than conventional bags. Once the City's Department of Public Works crews saw the product in use, they quickly understood the practical advantage of Greencore Can Liners.

DOUGLAS TAKES THE "MICHIGAN GREEN COMMUNITIES CHALLENGE"

The Douglas City Council recently took action authorizing the City's participation in the "Michigan Green Communities Challenge".

The Michigan Department of Energy, Labor & Economic Growth ("DELEG") and the Michigan Municipal League ("League") developed the "Michigan Green Communities Challenge", a program designed to provide communities with tools to incorporate energy efficiency and conservation strategies. In a unique collaborative effort between DELEG and the League, the Challenge is a step by step process designed to ensure that all Michigan communities have the tools necessary to incorporate energy efficiency and conservation strategies.

"All Michigan communities are eligible to complete the Basic Challenge", said DELEG Director Stanley Pruss, who also serves as the State's Chief Energy Officer. "The Basic Challenge is a commitment community leaders can make to adopt policies and programs of energy efficiency and conservation".

Daniel P. Gilmartin, executive director and CEO of the League, added, "At its most basic level, the Challenge is a recognition program developed through the joint efforts of the Bureau of Energy Systems and the League and is intended to provide a roadmap for all communities-large and small-to 'go green'. Additionally, the Challenge is specifically designed to assist communities that apply for funds under the Energy Efficiency and Conservation Block Grant Program".

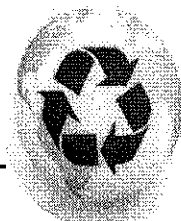
Douglas officials believe investments in energy efficiency represent a major opportunity for Michigan to create jobs, save money, and reduce the State's reliance on fossil fuels. In fact, energy efficiency creates more jobs per dollar than fuel-based solutions. By replacing traditional fossil fuel energy, Michigan's energy efficiency program will save Michigan over \$3 billion in electricity costs over the next 20 years.

Michigan stands to receive approximately \$1 billion in American Recovery and Reinvestment Act (ARRA) funds for energy efficiency and renewable energy. DELEG is responsible for deployment of these funds to support three of Governor Granholm's five key priorities for investing Michigan's share of economic recovery dollars:

1. Creating new jobs to jumpstart Michigan's economy.
2. Training Michigan workers and educating Michigan students for good jobs here today and new jobs created tomorrow.
3. Investing in energy efficiency and renewable energy technologies to create jobs, save money, and reduce the state's reliance on fossil fuels.

DELEG's Bureau of Energy Systems is specifically charged with coordinating ARRA funds in a number of energy-related programs including an expanded State Energy Program; the Energy Efficiency Conservation Block Grant Program (EECBG) program; and an Energy Efficient Appliance Rebate Program.

The Bureau is also working with the Michigan Municipal League to prepare and assist communities in the implementation of the EECBG. The Bureau also administers the Retired Engineer Technical Assistance Program (RETAP) that provides no-cost onsite pollution prevention and energy efficiency assessments to businesses, and Rebuild MI Program, which provides onsite energy efficiency assessments to public buildings, as well as other programs including Green Lodging Michigan, Clean Cities, Michigan Biomass Energy Program, and the Green Communities Challenge.



RADON ACTION WEEK
October 18-24, 2009

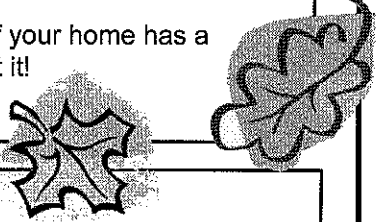
Nearly 1 in 8 homes in Michigan would be expected to have a radon problem. Radon is a tasteless, odorless, colorless, radioactive gas that is naturally occurring in soil and rock. It enters buildings through openings in the foundation floor or walls (sump openings; crawlspaces; floor/wall joints; cracks; space around plumbing, wiring or ductwork).

Radon is the second leading cause of lung cancer in the U.S., resulting in more than 600 new cases per year in Michigan.

Where to get a Radon Test Kit.

Radon test kits are available from the Allegan County Health Department, Environmental Health Division (269 673-5411) and MSU Extension offices (269 673-0370). Visit www.mi.radon.com to purchase a kit online.

The only way to know if your home has a radon problem is to test it!



Autumn Soil Care

Now is an excellent time to focus on improving the health of soils in your landscape. Late summer and autumn is a peak period for fine root development in woody landscape plants and is also the preferred time to improve soil conditions to accommodate root growth. Nutrients applied to the soil now will be converted for absorption by actively growing plant roots. These nutrients are stored in the plant over the winter and are ready to support crown development next spring. Nitrogen in fertilizer products is formulated to be released gradually during periods when soils are moist and relatively warm. So nitrogen that is not released in the fall remains in an insoluble form until spring when conversion to increased nutrient intake resumes.

Fall is also ideal for mulching woody plants or top-dressing existing mulch beds. Mulches help moderate soil temperatures and conserve soil moisture. This is important for reduction of winter injury on evergreens and on less hardy species that are prone to low temperature injury. Mulches are generally applied after leaf-fall but before soil freezes in northern regions of the country.

2009 EVENT SCHEDULE

- | | |
|---|---|
| Second Sunday
Each Month
All Year | Pancake Breakfast
St. Peters Church
Douglas |
| Sept. 19 | Clothesline Art Show
Beery Field, Douglas |
| Sept. 20 | Douglas Dutchers
Base Ball
2 p.m. Beery Field |
| Oct. 3 | OktoberFest
Beery Field, Douglas |
| Oct. 10-11 | Annual Gallery Stroll |
| Oct. 31 | Halloween Parade
10:00 p.m.
Center St., Douglas |
| Nov. 21 | Holiday Preview
Center Street, Douglas |
| Nov. 27 | Weekend Horse Drawn
Carriage Rides begin for
the Holiday Season |
| Dec. 31 | New Year's Eve
Fireworks |

Douglas Resident Judy Anthrop's ***A Portrait of Ox-Bow*** is now available. The book is a celebration of Ox-Bow's unique history. It includes watercolor images by Judy as well as images from regional artists and paintings by Ox-Bow's founders and teachers. For further information, contact Judy Anthrop at 857-1183.



City of the Village of Douglas
86 W. Center St.
Douglas MI 49406-0757
phone: 269 857-1438
fax: 269 857-4751
www.ci.douglas.mi.us
douglas@ci.douglas.mi.us

PRST STD
US POSTAGE
PAID
PERMIT #3
DOUGLAS MI

7 EASY WAYS TO START BEING "GREEN"

Douglas residents recycled
more than 52 tons of materials
during 2008!

Reduce - Use less stuff. Re-think some of your habits. You don't always need a fresh sheet of paper. If you need to make a list, use a junk mail envelope. There are occasions when you can skip using paper entirely. Send an email. Send out party invitations by email and you save not only paper but postage also.

Reuse - Think about inventive use for items that you're discarding. Old jars make funky vases. Bake breads in various sized tin cans. Plastic margarine tubs may be used as freezer containers. Transform old socks into a puppet project for the kids.

Recycle - Take advantage of the recycling program offered by the City of Douglas. Curbside pick-up is offered for common items such as glass, plastic, styrofoam and paper.

Power Down - When you walk out of a room, turn the lights off. When the MP3 player is fresh and ready to go, unplug the charger. Activate the low-power settings, such as sleep and hibernate, on computers, monitors and printers. According to the Department of Energy, 40% of all household electricity is consumed when products are turned off.

Don't Be a Drip - Turn the water off when brushing your teeth. This saves as much as eight gallons a day. Repair dripping faucets and showerheads. Water your lawn and garden during cooler morning hours. Aim sprinklers where water is needed rather than on sidewalks or driveway.

Shop Smart - Select products with genuine eco-friendly features, such as non-toxic and natural contents, made from recycled materials, minimum packaging, and produced locally.

Don't Tire Out - Keeping tires at their proper pressure improves gas mileage. Plus, when properly inflated, tires are safer and more durable. You can also improve gas mileage by 1-2 percent by using the manufacturer's recommended grade of motor oil.